



D V2 Series

More Than a Wall A Total Rental Solution

All Quick Setup in One



Modular Design



Light & thin



Easy Installation



Front & Rear Maintenance



Compatible PSU Box



Corner Protection



Infinite Possible Shapes



Right-Angle Splicing

Applications



Concert



Launch Event



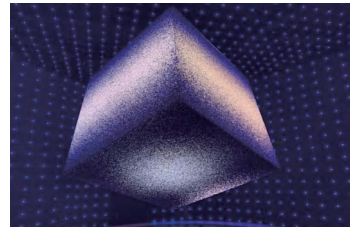
Press Conference



Exhibitions



Festival Celebration



Lightweight, Professional -Grade image quality

7680HZ High Refresh Rate + 16bit color depth, revealing every detail for an upgraded visual experience.



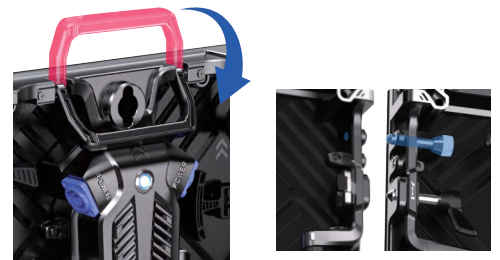
Spares Parts Standardization

Module Design, different pixel pitch modules can share the same frame; Eliminating the need to stock excessive spare parts and thereby saving considerable time and costs.



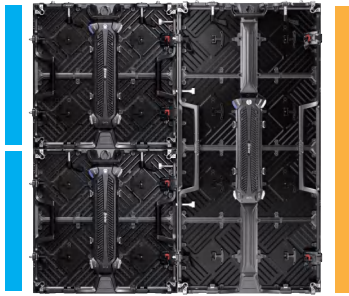
Quick Installation

Positioning pin design, self-retracting handle, faster connect and installation.



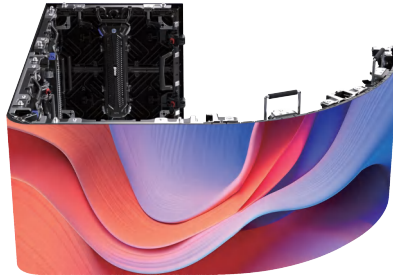
Free assembly

Big and small cabinet support left-right interlocking and staggered assembly, for rapid construction of stage.



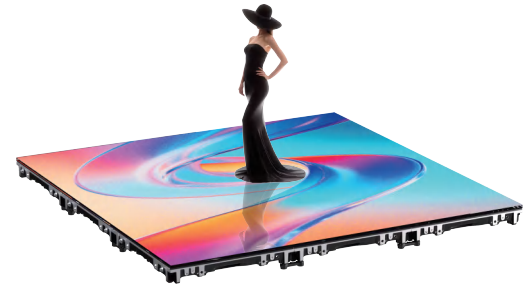
Multi-series creative assembly

Splicing with US, UR, UW series; Versatile styling and creative combinations to suit diverse scenarios.



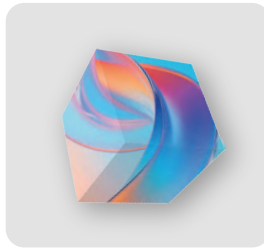
Floor Screen Installation

PC cover + footpads, 1.5-tonne super-strong load capacity; Instantly transforms into an immersive giant-screen stage, igniting breathtaking visual effects!



Stage Creative Applications

4 side 45° cutting cabinet design, versatile and adaptable - curved, right-angled, cube, triangular and other bespoke shapes are available; Creative displays, assembled to your heart's content!



Product Model	D-191V2	D-261V2	D-291V2	D-391V2	D-290V2	D-390V2	D-480V2
LED Type	SMD1212	SMD1515	SMD2020	SMD2020	SMD1415	SMD1921	SMD1921
Pixel Pitch (mm)	1.9	2.6	2.9	3.9	2.9	3.9	4.8
Brightness (nit)	800				4000		
Panel Dimensions (WxHxD, mm)	500x500x70 (19.69x19.69x2.76")	500x500x70 (19.69x19.69x2.76") 500x1000x70 (19.69x39.37x2.76")					
Panel Resolution (WxH)	256x256	192x192 192x384	168x168 168x336	128x128 128x256	168x168 168x336	128x128 128x256	104x104 104x208
Panel Weight (kg)	7.2 (15.87lbs)	7.2 (15.87lbs) / 12 (26.46lbs)			7.4 (16.31lbs) / 12.2 (26.9lbs)		
Panel Material	Die Casting Aluminum						
Grayscale (bit)	16						
Refresh Rate (Hz)	7680						
viewing Angle (H/V)	160°/160°			140°/140°			
IP Rating (Front/Rear)	IP40/IP21				IP65/IP54		
Certification	CE						

* Specifications may vary by configuration; please contact us for details. Dicolor reserves the right of final interpretation.



Shenzhen Dicolor Group Co., Ltd.

Add: No.13 Huiye Road, Tangjia Community, Fenghuang Street, Guangming District, Shenzhen, China.

Tel: +86-755-3369 1736

E-mail: inquiry@dicolorled.com

Web: www.dicolorled.com